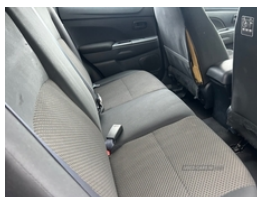


Mitsubishi ASX 1.6 2 5dr | Apr 2014

**** GREAT HISTORY ****

£5,450



GREY, 73K, POWERSTEERING, REMOTE CENTRAL LOCKING, ELECTRIC WINDOWS, ELECTRIC MIRRORS, AIR CONDITIONING, CD PLAYER, ALLOYS, COLOUR CODED, SERVICE HISTORY, MOTD; AUGUST 2024, GREAT DRIVER IN GREAT CONDITON, FIRST TO VIEW WILL BUY!

**** ALL CARDS ACCEPTED ****

**** FINANCE AVAILABLE ****

**** TRADE INS WELCOME ****

**** FLEXIBLE VIEWING ****

**** FULL DEALER FACILTIES ****

Vehicle Features

'Lights On' warning buzzer, 2nd row 60/40 split/fold, 3 height adjustable rear headrests, 3x3 point rear seatbelts, 4 speakers, 16" alloy wheels, ABS+EBD+Brake assist, Accessory socket in floor console, Active stability and traction control, Automatic start/stop system, Auxiliary input socket, Bluetooth hands free telephone kit, Body colour bumpers, Cargo room underfloor compartment, Central door locking, Centre rear armrest, Chrome effect interior door handles, Colour coded door mirrors, Colour keyed door handles, Console stowage box, Curtain airbags, Deadlocks, Driver and passenger sunvisors, Drivers knee airbag, Dual front seats side SRS airbags, Dual stage Driver/Passenger Airbags, Electric adjustable heated door mirrors, Electric folding door mirrors, Electric front windows, Electric rear windows, Emergency stop signalling system, Fabric upholstery, Follow me home headlights, Front accessory power socket, Front adjustable slide and recline seats, Front and rear door pockets, Front cupholders, Front door pocket bottle holders, Front map reading lights, Front passenger airbag deactivation, Front seatbelt

Miles:	73371
Fuel Type:	Petrol
Transmission:	Manual
Colour:	Grey
Engine Size:	1590
CO2 Emission:	137
Tax Band:	E (£190 p/a)
Body Style:	Hatchback
Insurance group:	13E
Reg:	UNZ1097

Technical Specs

DIMENSIONS

Length:	4295mm
Width:	1770mm
Height:	1615mm
Seats:	5
Luggage Capacity (Seats Up):	416L
Gross Weight:	1870KG
Max. Loading Weight:	600KG

PERFORMANCE & ECONOMY

Fuel Consum. (Urban Cold):	36.7MPG
Fuel Consum. (Extra Urban):	57.6MPG
Fuel Consum. (Combined):	47.1MPG
Fuel Tank Capacity:	63L
Number Of Gears:	5 SPEED
Top Speed:	114MPH
Acceleration 0-100 km/h:	11.4s
Engine Power BHP:	115.3BHP

pretensioners + load limiters, Height adjustable front headrests, Hill start assist, Illuminated glovebox, Illuminated ignition key hole, Immobiliser, Interior light, Isofix child seat preparation, Locking wheel nuts, Luggage area lamp, Luggage tie-down hooks, Manual adjust driver/passenger seats, Manual air conditioning, Needle punch carpet, Non woven fabric headlining, PAS, Radio/CD + MP3, Rear headrests, Rear luggage cover, Roof mounted aerial, Seatbelt warning lamp, Thatcham Cat.1 alarm, Tilt/telescopic steering column, Trip computer, Tyre repair kit, Variable intermittent front wash/wipe