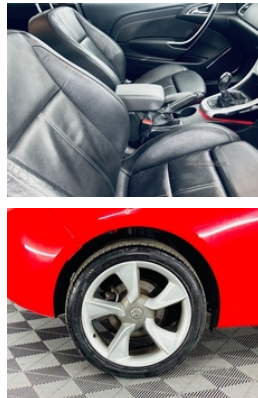


Vauxhall Astra GTC 2.0 CDTi 16V SRi 3dr | Jan 2014

£5,450

**** GREAT HISTORY ** FULL LEATHER ** ONLY 62K ****



RED, 62K, POWERSTEERING, REMOTE CENTRAL LOCKING, ELECTRIC WINDOWS, ELECTRIC MIRRORS, AIR CONDITIONING, CD PLAYER, FULL BLACK LEATHER INTERIOR, ALLOYS, COLOUR CODED, MOT;D FEB 2025, SERVICE HISTORY, TIDY EXAMPLE! FIRST TO VIEW WILL BUY!

**** ALL CARDS ACCEPTED ****

**** FINANCE AVAILABLE ****

**** TRADE INS WELCOME ****

**** FLEXIBLE VIEWING ****

**** FULL DEALER FACILITIES ****

**** INDOOR VIEWING AVAILABLE ****

Vehicle Features

3 spoke leather covered steering wheel, 3x3 point rear seatbelts, 6 speakers, 12V power in rear centre console, 60/40 split rear seats, ABS + EBD + EBA, Active head restraints, Ambient interior lighting, Body coloured bumpers, Centre console cupholders, Chrome effect window side mouldings, Cruise control, Curtain airbags, Dark tinted rear windows, DMB digital radio, Driver/Front Passenger airbags, Dual horn, Electrically adjustable and heated door mirrors, Electric front windows, ESP, Exterior temperature gauge, Front centre armrest with storage compartment, Front fog lamps, Front passenger airbag deactivation, Front seat back storage pockets, Hill start assist, Immobiliser, Isofix system on outer rear seats, Leather gear knob, Low fuel level warning light, Multi function trip computer, PAS, Reach + rake adjustable steering column, Rear headrests, Rear wiper, Remote central deadlocking, Rev counter, Seatbelt

Miles:	62859
Fuel Type:	Diesel
Transmission:	Manual
Colour:	Red
Engine Size:	1956
CO2 Emission:	127
Tax Band:	D (£160 p/a)
Body Style:	Hatchback
Insurance group:	20E
Reg:	LP63MXR

Technical Specs

DIMENSIONS

Length:	4466mm
Width:	1840mm
Height:	1482mm
Seats:	5
Luggage Capacity (Seats Up):	380L
Gross Weight:	2040KG
Max. Loading Weight:	565KG

PERFORMANCE & ECONOMY

Fuel Consum. (Urban Cold):	49.6MPG
Fuel Consum. (Extra Urban):	65.7MPG
Fuel Consum. (Combined):	58.9MPG
Fuel Tank Capacity:	56L
Number Of Gears:	6 SPEED
Top Speed:	131MPH
Engine Power BHP:	162.3BHP

warning, Service interval indicator, Side airbags, Sight and light pack - Astra GTC, Sports seats, Stainless steel exhaust tailpipe, Steering wheel mounted audio controls, storage tray and ashtray, Traction control